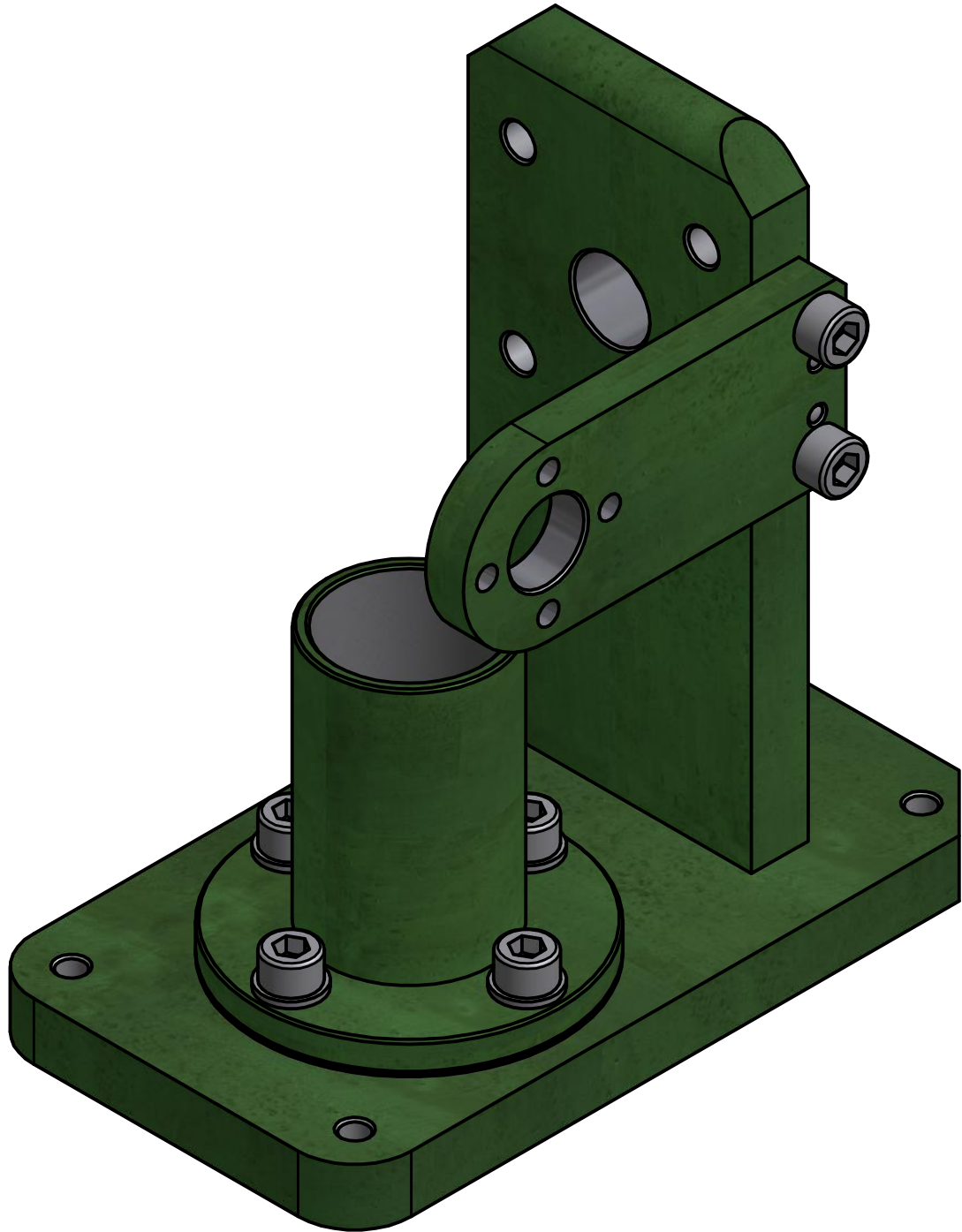


PARTS LIST				
ITEM	QTY	PART NUMBER	DESCRIPTION	MATERIAL
1	1	Base		Stainless Steel
2	1	Standard		Steel, Mild
3	1	Cylinder		Steel, Mild
9	2	Air Channel Packing		Rubber
10	1	Cylinder Packing		Rubber
12	1	Support		Steel, Mild
13	4	DIN 912 - M6 x 20	Cylinder Head Cap Screw	Steel, Mild
14	2	ISO 8734 - 5 x 20 - A	Parallel pins of hardened steel and martensitic stainless steel (Dowel pins)	Steel
15	2	ISO 8734 - 3 x 16 - A	Parallel pins of hardened steel and martensitic stainless steel (Dowel pins)	Steel
16	4	DIN 128 - A6	Spring Washer	Steel, Mild
17	4	DIN 912 - M6 x 16	Cylinder Head Cap Screw	Steel, Mild



Revision		Date	Description	
Engineered by:		Name:	Date:	Scale: 1:1
		Designer:	Galba, J.	17/07/2010
		Approved:	Galba, J.	17/07/2010
Project:		Material:		
Miniature Model Hot Air Engine		Total Mass: N/A		
Title:		Sheet:		
Horizontal Stirling Engine Assembly Base		0001		
Drawingnumber:		Design State:		
		Released		

This document is for educational purposes only and property of Inventor Wizard. It shall not without our permission be altered, copied, used for manufacturing or communicated to any other person or company.



Drawing made with
autodesk inventor
Revisions only
permitted by CAD